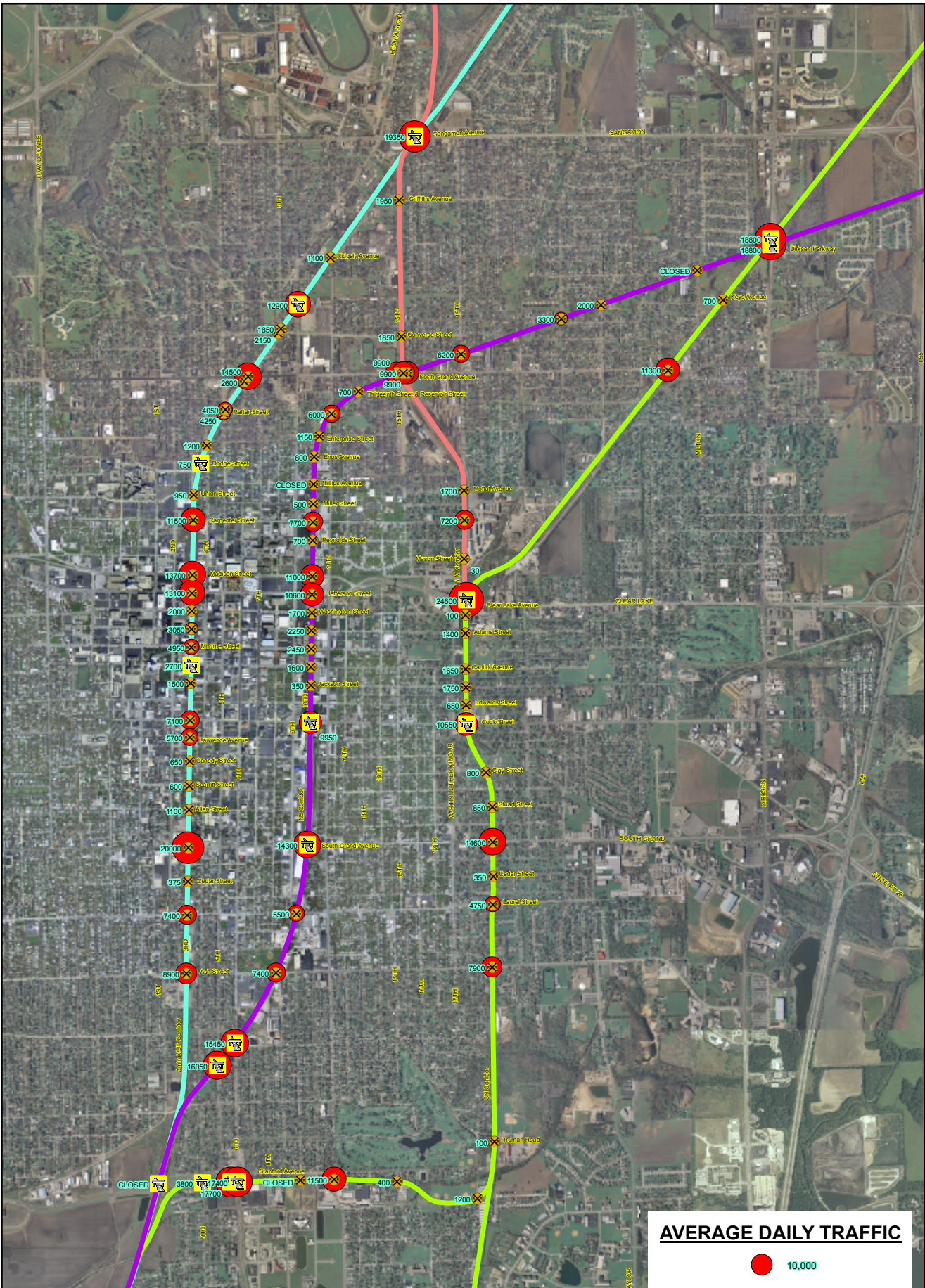


I:\Projects\09L0179\09L0179_001\09L0179_001_Springfield_Railroad_Corridor_Study_Average_Daily_Traffic.pdf
 1/27/2010 10:58:00 AM
 Project Documents\09L0179\09L0179_001_Springfield_Railroad_Corridor_Study_Average_Daily_Traffic.pdf



AVERAGE DAILY TRAFFIC

● 10,000

LEGEND

Amtrak/UP	Grade Separation	Important Landmarks
NS	Railroad Crossing	Hospital
CN/IC	School	Ambulance Facility
I & M	Park	Fire Station

0 0.25 0.5 1 Miles

N

HANSON

Hanson Professional Services Inc.
 1525 South Sixth Street
 Springfield, Illinois 62707
 Registration No. 184-001084

AVERAGE DAILY TRAFFIC

SPRINGFIELD RAILROAD CORRIDOR STUDY
SPRINGFIELD, SANGAMON COUNTY, ILLINOIS

PROJECT NO. 09L0179 FIGURE NO. 1